

**SAILING INSTRUCTIONS**  
**Including Amendment 4**  
**Louis Vuitton Cup**  
**America's Cup Challenger Series**  
**(LVC)**  
**July 7 – September 2, 2013**

**1 Schedule of Races**

- 1.1 Races shall be held according to the Louis Vuitton Cup, America's Cup Challenger Series Format agreed on July 2, 2012, with the amended schedule in Appendix A.
- 1.2 In the Round Robin stage, all races of a round shall be completed before the first race of the next round may start.
- 1.3 In the Final stage, a competitor-requested postponement as described in Protocol article 12(d)(v) shall be communicated to ACRM over Channel 8 of the ACRM supplied radios or as a backup VHF channel 88.
- 1.4 No race shall start after 1430.

**2 Crew Weigh In**

- 2.1 In accordance with the Measurement Committee Measurement Methodology No.8, crews shall weigh in between 0800 and 1000 on the following designated days:  
Saturday, July 6  
Monday, July 15  
Monday, July 22  
Monday, July 29  
Monday, August 5  
Sunday, August 11  
Friday, August 16  
Friday, August 23  
Thursday, August 29 (if the LVC Final is not completed prior to this date)
- 2.2 The crew of a Competitor that will not participate in a match of the LVC is not required to weigh in until the scheduled weigh in date prior to the next match in which it will race.
- 2.3 Any replacement crew not weighed on a designated day must be weighed before participating in a race.

**3 Haul out Schedule**

Each team may haul out at its discretion. This SI is the haul out schedule from the Regatta Director with respect to RRSAC 88.

**4 Entry Sides**

- 4.1 In the LVC Semi Final stage, the Challenger with the higher combined scores from the LVC Round Robin stage shall choose the entry side for the first race. Competitors shall alternate entry sides in subsequent races.
- 4.2 In the LVC Final:
  - (a) The winner of the Semi-Final stage shall choose the entry side for first race of the series. Challengers shall then alternate entry sides for each subsequent race sailed as the first race of a day.

(b) The other Challenger shall choose the entry side for the first time a race is sailed as the second race of a day. Challengers shall then alternate entry sides for each subsequent race sailed as the second race of a day.

## 5 Marks

- 5.1 All marks will be round inflatable buoys that are approximately 20 feet in diameter and three feet high, with an 18-foot mast located in the center of the buoy.
- 5.2 The entry line will be between the masts on the marks at each end of the entry line.
- 5.3 The starting line will be between the masts on the marks at each end of the starting line.
- 5.4 The finishing line will be between the masts on the marks at each end of the finishing line.
- 5.5 The signal boat will be the 60-foot power catamaran “Regardless”.
- 5.6 A replacement mark will be an 8-meter RIB flying an orange flag. The use of a replacement mark will be communicated to Competitors over RO Comms.
- 5.7 In the case that a mark of a gate is missing, and a replacement mark is not in place, the remaining mark shall be rounded to starboard. Competitors will be notified over RO Comms.

## 6 The Course

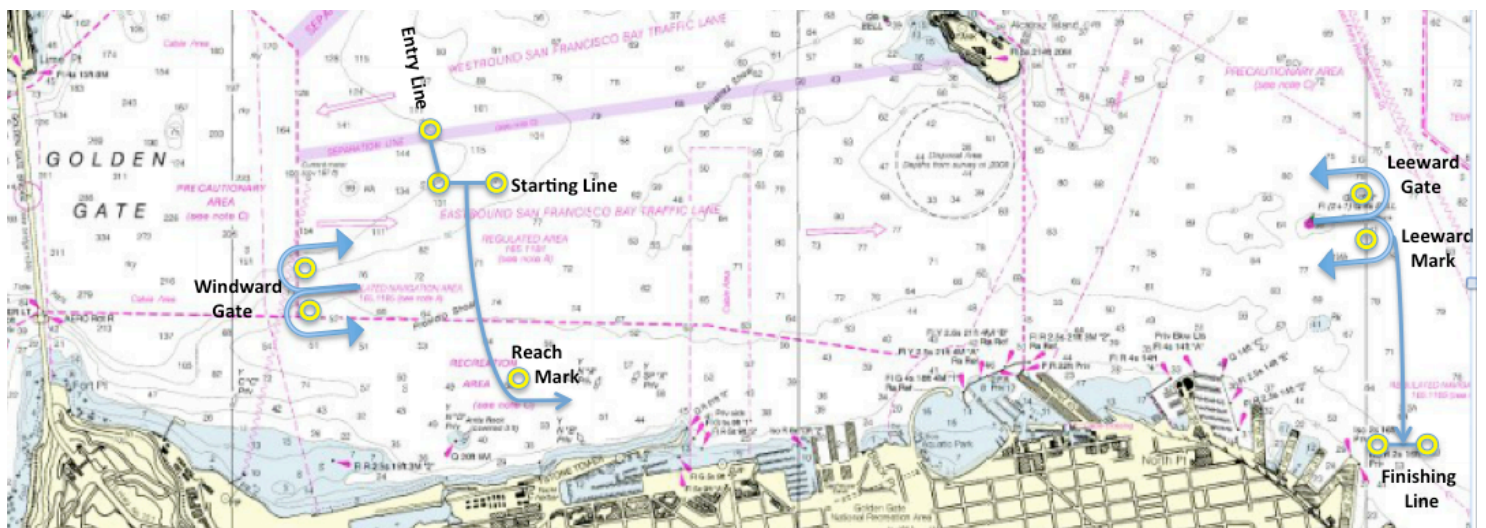
- 6.1 The course for races of the LVC will be Course 1 or Course 2 as issued by America’s Cup Regatta Notice 2011/81.

Course 1:

Start → Reach Mark (to port) → Leeward Gate → Windward Gate → Leeward Mark (to starboard) → Finish

Course 2:

Start → Reach Mark (to port) → Leeward Gate → Windward Gate → Leeward Gate → Windward Gate → Leeward Mark (to starboard) → Finish



## 7 TIME LIMIT

- 7.1 The time limit for Course 1 is 40 minutes.
- 7.2 The time limit for Course 2 is 70 minutes.

# SAILING INSTRUCTIONS

## Louis Vuitton Cup America's Cup Challenger Series

### Appendix A. LVC Schedule

Saturday	Sunday	Monday	Tuesday	Wednesday	Thursday	Friday
6 July	7 July	8 July	9 July	10 July	11 July	12 July
	<b>LVC Round Robin 1</b>		<b>LVC Round Robin 1</b>		<b>LVC Round Robin 1</b>	
	1215 ETNZ vs LR	Reserve Day	1215 ART vs ETNZ	Reserve Day	1215 LR vs ART	Reserve Day
13 July	14 July	15 July	16 July	17 July	18 July	19 July
<b>LVC Round Robin 2</b>	<b>LVC Round Robin 2</b>		<b>LVC Round Robin 2</b>		<b>LVC Round Robin 3</b>	
1215 LR vs ETNZ	1215 ETNZ vs ART	Reserve Day	1215 ART vs LR	Reserve Day	1215 ART vs ETNZ	Reserve Day
20 July	21 July	22 July	23 July	24 July	25 July	26 July
<b>LVC Round Robin 3</b>	<b>LVC Round Robin 3</b>		<b>LVC Round Robin 4</b>		<b>LVC Round Robin 4</b>	
1215 LR vs ART	1215 ETNZ vs LR	Reserve Day	1215 LR vs ETNZ	Reserve Day	1215 ART vs LR	Reserve Day
27 July	28 July	29 July	30 July	31 July	1 August	2 August
<b>LVC Round Robin 4</b>	<b>LVC Round Robin 5</b>		<b>LVC Round Robin 5</b>		<b>LVC Round Robin 5</b>	
1215 ETNZ vs ART	1215 ETNZ vs LR	Reserve Day	1215 ART vs ETNZ	Reserve Day	1215 LR vs ART	Reserve Day
3 August	4 August	5 August	6 August	7 August	8 August	9 August
Reserve Day	Reserve Day	Reserve Day	<b>LVC Semi Final</b>	<b>LVC Semi Final</b>	Reserve Day	<b>LVC Semi Final</b>
10 August	11 August	12 August	13 August	14 August	15 August	16 August
<b>LVC Semi Final</b>		<b>LVC Semi Final</b>	<b>LVC Semi Final</b>		<b>LVC Semi Final</b>	
1315 SF - Race 4	Reserve Day	1315 SF - Race 5*	1315 SF - Race 6*	Reserve Day	1315 SF - Race 7*	Reserve Day
17 August	18 August	19 August	20 August	21 August	22 August	23 August
<b>LVC Final</b>	<b>LVC Final</b>			<b>LVC Final</b>		
1310 Final - Race 1 1410 Final - Race 2	1310 Final - Race 3 1410 Final - Race 4	Reserve Day		1310 Final - Race 5 1410 Final - Race 6	Reserve Day	Reserve Day
24 August	25 August	26 August	27 August	28 August	29 August	30 August
<b>LVC Final</b>	<b>LVC Final</b>			<b>LVC Final</b>		<b>LVC Final</b>
1310 Final - Race 7 1410 Final - Race 8*	1310 Final - Race 9* 1410 Final - Race 10*	Reserve Day		1310 Final - Race 11* 1410 Final - Race 12*	Reserve Day	1310 Final - Race 13*
31 August	1 September	2 September	3 September	4 September	5 September	6 September
Reserve Day	Reserve Day	Reserve Day				