



America's Cup World Series San Francisco August 21-26, 2012



SPECTATOR INFORMATION

Emergencies: Hail U.S. Coast Guard on VHF 16

Hello, and welcome to the 2012 America's Cup World Series (ACWS) - San Francisco! This sheet will provide you with a bulleted list of procedures and instructions that we ask you to follow to ensure your safety while providing you with the best opportunity to experience the AC45 catamarans.

SPECTATORS ARE ASKED TO FOLLOW THE INSTRUCTIONS OF ANY BOAT WITH AN OFFICIAL AMERICA'S CUP MARSHAL OR STAKEBOAT FLAG.



Course Marshal

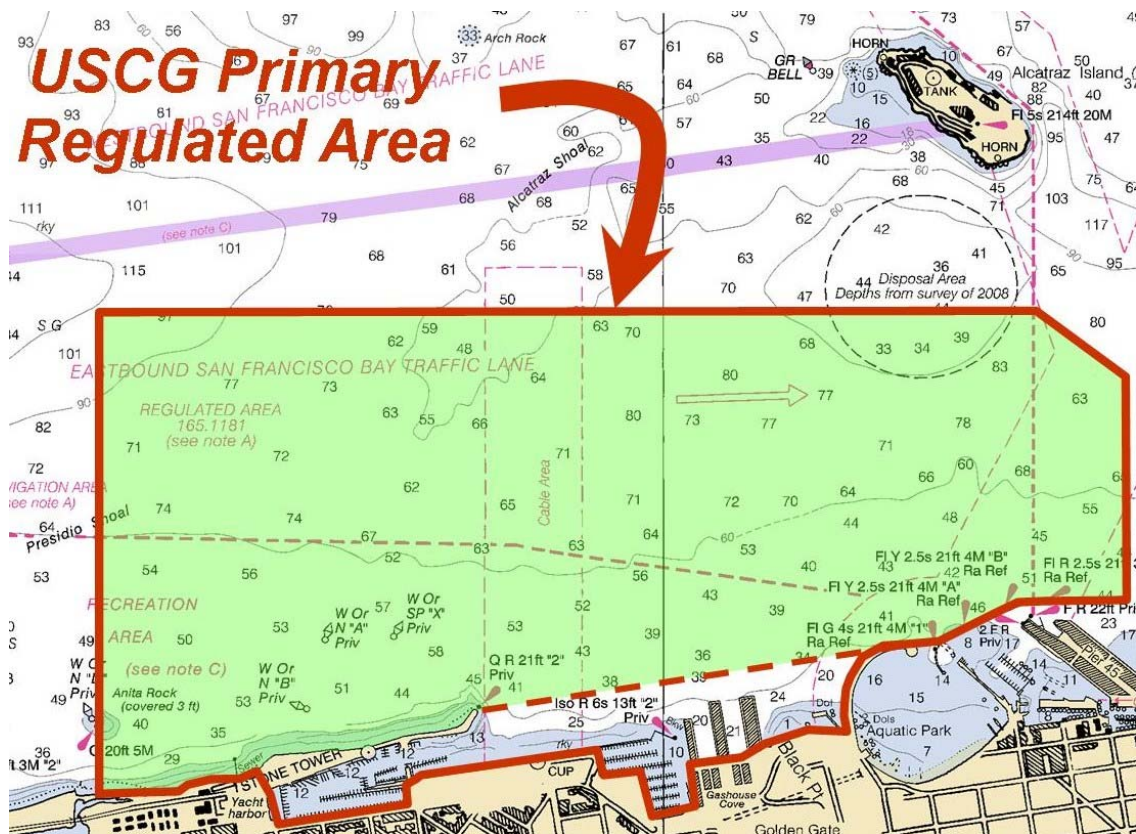


Stake Boat

U.S. COAST GUARD AND LOCAL MARINE AUTHORITIES WILL BE IN THE AREA TO PATROL THE RACE AREA AND ENFORCE SAFETY REGULATIONS

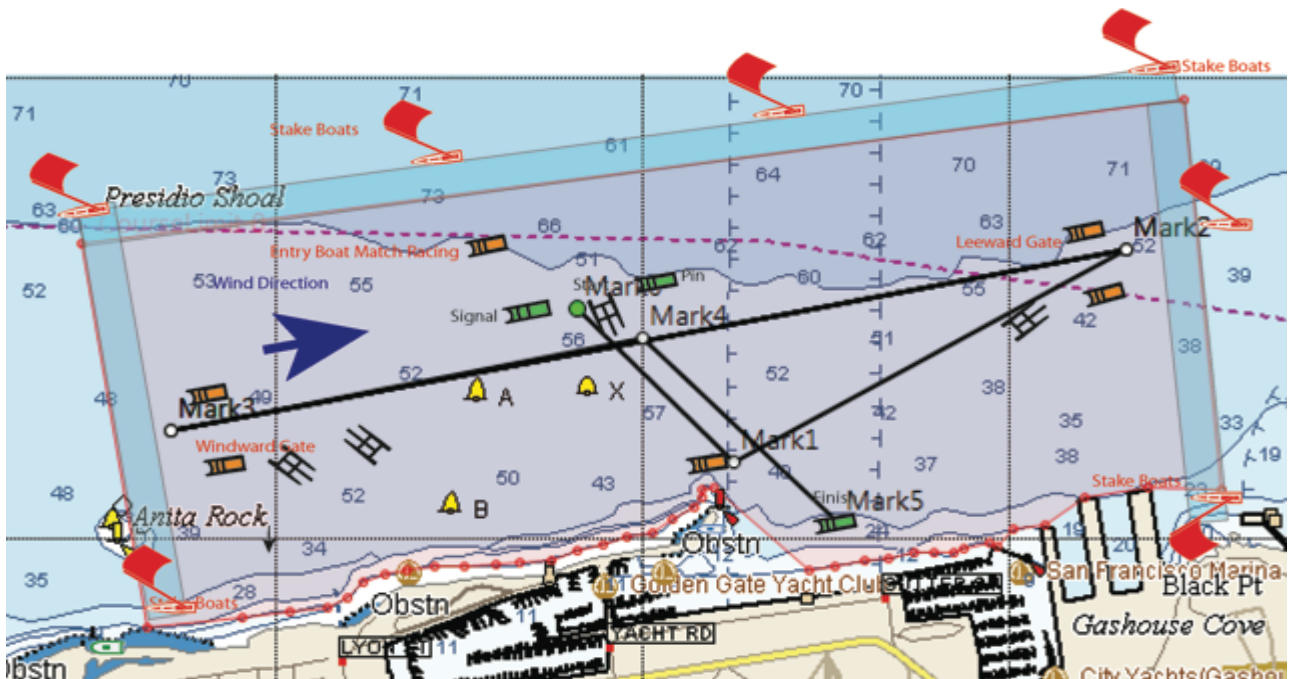
- Please be familiar with NOAA Nautical Chart # 18650 which includes the racing area.
- The image on the following page indicates the approximate location and orientation of the Regulated Race Area. The Race Course will be marked inside this Regulated Area by "Stake Boats".
- Spectators are asked to stay outside of the lines delineated by "Stake Boats" flying large red America's Cup flags.
- No vessel may enter the racing area without permission from the USCG Patrol Commander on VHF-23.
- The Regulated Area will be enforced starting one hour prior to racing until racing has completed.
- Refusal to adhere to any request from ACWS Officials may result in action from USCG or local marine authorities.
- America's Cup will provide race related information and commentary on VHF 20.

Date	Race Area Set	Event Timing
21-Aug	1300	1400-1600
22-Aug	1300	1400-1600
23-Aug	1300	1400-1600
24-Aug	1300	1400-1600
25-Aug	1300	1400-1600
26-Aug	1130	1145-1300



ACWS Race Area

The race area contains the intended race course and a service corridor. This area is not fixed and will be adjusted within the regulated area based on the conditions for that race. The stake boats will adjust to mark the boundaries of the race area and spectators are allowed take position along that boundary.



Not to Scale