



## **SAILING INSTRUCTIONS AMERICA'S CUP MATCH (including Amendments 1-2)**

### **1 Schedule of Races**

- 1.1 Two races are scheduled on each of the following days until the conclusion of the Match:  
Saturday, September 7, 2013  
Sunday, September 8, 2013  
Tuesday, September 10, 2013  
Thursday, September 12, 2013  
Saturday, September 14, 2013  
Sunday, September 15, 2013  
Tuesday, September 17, 2013  
Thursday, September 19, 2013  
Saturday, September 21, 2013
- 1.2 The scheduled start time of the first race of the day is 1315 and the scheduled start time of the second race of the day is 1415 subject to Protocol Article 12(d)(iii).
- 1.3 Reserve days are:  
Wednesday September 18, 2013  
Friday September 20, 2013  
Sunday September 22, 2013  
Then each day thereafter unless modified by the Regatta Director.
- 1.4 Racing on a reserve day and the scheduled start time of races held on reserve days shall be determined by the Regatta Director based on meteorological forecast and in consultation with the Competitors, and communicated to the Competitors by 1700 the day prior.
- 1.5 No race shall start after 1440.
- 1.6 A Competitor requesting postponement under Protocol article 12(d)(v) shall inform ACRM via Channel 8 of the ACRM supplied radios, VHF 88 or by direct contact with a race officer on the Signal Boat.

### **2 Crew Weigh In**

Measurement Committee Measurement Methodology No.8 shall apply. Crews shall weigh in between 0800 and 1000 at their Team Base or a location agreed to with the Measurement Committee.

### **3 Crew List**

Competitors shall send the crew list for each race by email to [Hannah.Davis@americascup.com](mailto:Hannah.Davis@americascup.com) or text to 415 926 3477 by 0900 on the day of that race. Competitors may update this list before the preparatory signal of a race. Crew lists may be made public. ACRM prohibits Competitors from protesting this instruction.

### **4 Haul out Schedule**

Each Competitor may haul out at its discretion.

## 5 Entry Sides

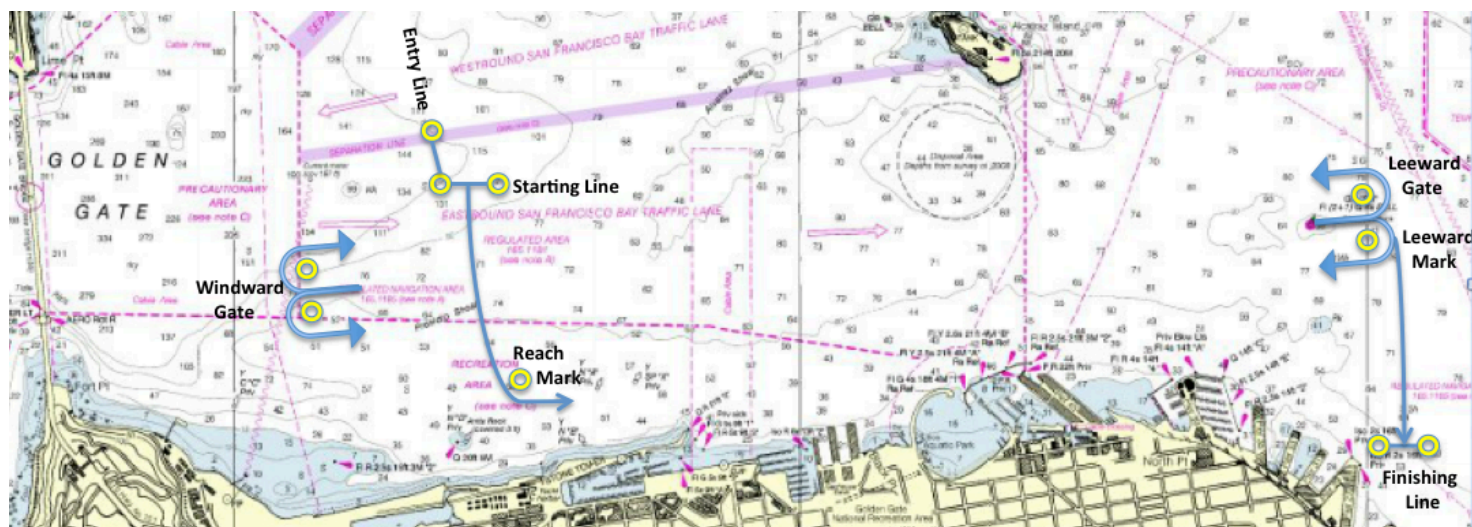
- 5.1 During the press Conference on September 5, 2013, the Challenger shall choose the entry side for first race of the series. Competitors shall then alternate entry sides for each subsequent race sailed as the first race of a day.
- 5.2 During the press Conference on September 5, 2013, the Defender shall choose the entry side for the first race of the series sailed as the second race of a day. Competitors shall then alternate entry sides for each subsequent race sailed as the second race of a day.

## 6 Marks

- 6.1 Marks will be round inflatable buoys, 6.2 meters in diameter with a 5 meter mast in the center.
- 6.2 The entry line will be between the masts on the marks at each end of the entry line.
- 6.3 The starting line will be between the masts on the marks at each end of the starting line.
- 6.4 The finishing line will be between the masts on the marks at each end of the finishing line.
- 6.5 The signal boat will be the 18-meter power catamaran "Regardless".
- 6.6 A replacement mark will be an 8-meter ACRM powerboat flying an orange flag. The use of a replacement mark will be communicated to Competitors over RO Comms.
- 6.7 In the case that a mark of a gate is missing, and a replacement mark is not in place, the remaining mark shall be rounded to starboard. Competitors will be notified over RO Comms.

## 7 The Course

Start → Reach Mark (to port) → Leeward Gate → Windward Gate → Leeward Mark (to starboard) → Finish



## 8 TIME LIMIT

The time limit is 40 minutes.